

# MONTHLY MEMBERSHIP PROGRESS REPORT

LOCATION CALIFORNIA

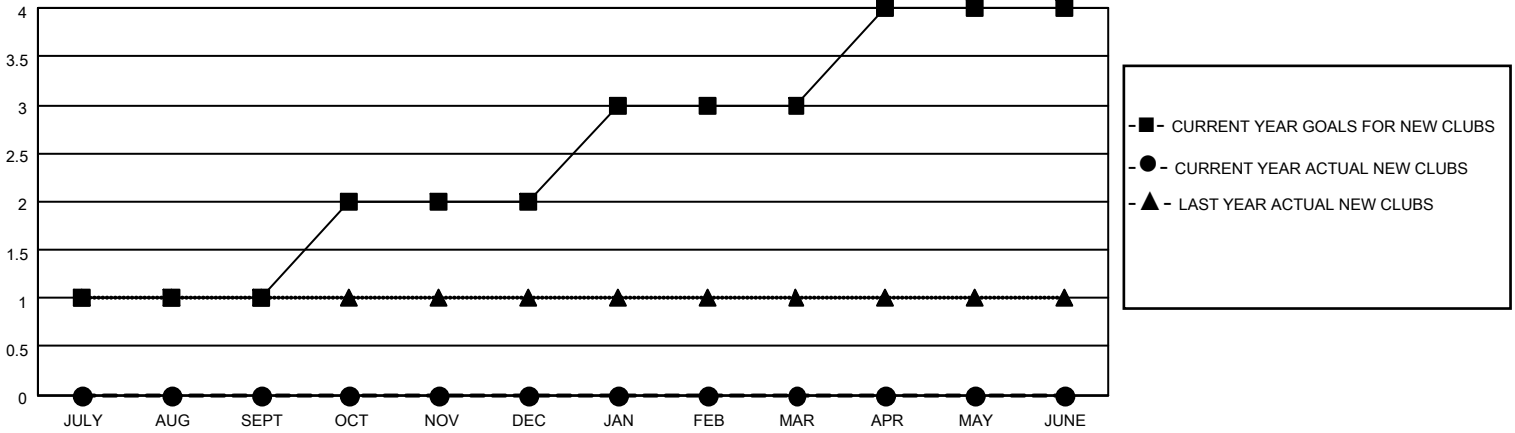
District 4 L6

Results as of: 3/31/2023

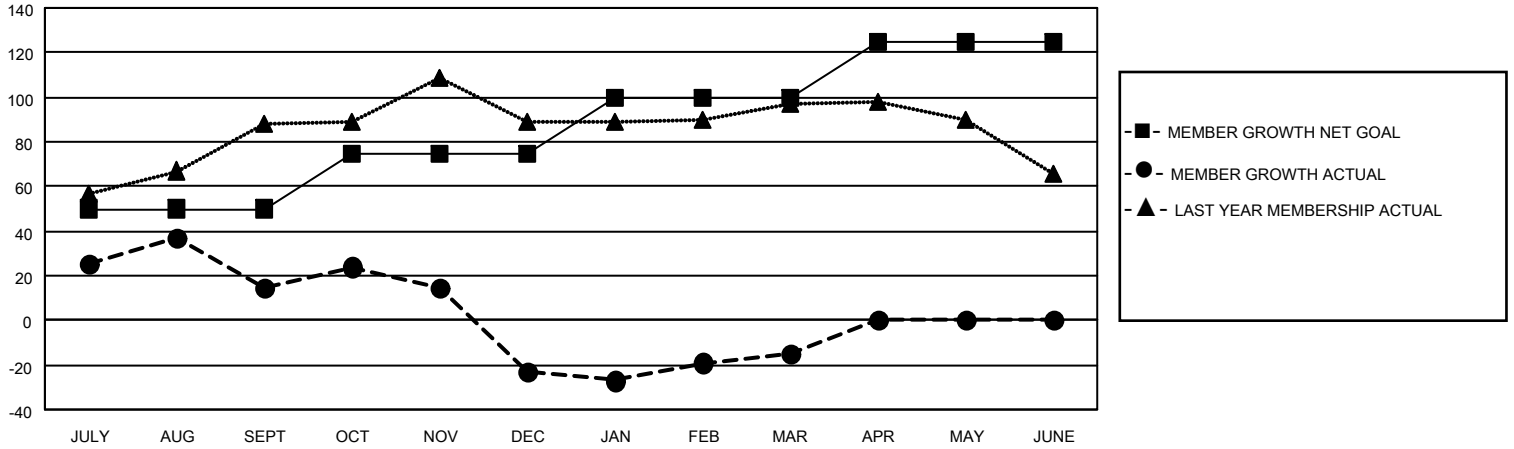
Clubs			
RESULTS FOR 2022-2023			
QUARTER	NEW CLUB GOAL	NEW CLUBS	DROPPED CLUBS
JULY/AUG/SEPT	1	0	1
OCT/NOV/DEC	1	0	3
JAN/FEB/MAR	1	0	1
APR/MAY/JUNE	1	0	0

Members			
RESULTS FOR 2022-2023			
QUARTER	MEMBER GROWTH NET GOAL	MEMBER GROWTH ACTUAL	DROPPED MEMBERS ACTUAL (including transfers)
JULY/AUG/SEPT	50	80	62
OCT/NOV/DEC	25	42	74
JAN/FEB/MAR	25	41	29
APR/MAY/JUNE	25	0	0

**GOALS AND ACTUAL NEW CLUBS CUMULATIVE**



**GOALS AND ACTUAL MEMBERS CUMULATIVE**



**DROPPED CLUBS: 5**

**33 CLUBS OF 55 ADDED 1 OR MORE NEW MEMBERS**

**GENDER DISTRIBUTION**

**DROPPED MEMBERS**

DECEASED	17
CLUB CANCELLED	15
OTHER	133
<b>TOTAL</b>	<b>165</b>

[CLICK HERE FOR CUMULATIVE MEMBERSHIP DATA](#)

MALE	606 (46.69%)
FEMALE	691 (53.24%)
NON BINARY	0 (0.00%)
PREFER NOT TO ANSWER	1 (0.08%)

TOTAL FAMILY UNIT MEMBERS 384

FAMILY MEMBERS PAYING HALF DUES 221